

# Freestyle...durable cubicle range for most environments

Decra Freestyle is a mid cost cubicle system constructed from Solid Grade Laminate panels.

SGL (or Compact) is hard wearing, waterproof and normally supplied self edged with either a crescent or lished and bevelled profile. If preferred, matching or contrasting edging is an option.

Freestyle's impermeability and toughness make it ideally suited for almost all environments ranging from Schools and colleges to Stadia, Pools and other Leisure projects.

Available in standard or extended heights, some options from our standard colour palette are shown. Depending only on cost, most colour schemes can be accommodated and the option of LooArt can add yet another dimension.

Contact Decra for more details.

**Decra Ltd**  
**34 Forest Business Park**  
**Argall Avenue**  
**London. E10 7FB**  
**Tele: 020 8520 4371**  
**Fax: 020 8521 0605**  
**Email: sales@decraltd.co.uk**  
**www.toiletcubicles.org**



Pilaster mounted satin anodised



rotary action lock



Pedestal foot



Manorfield school

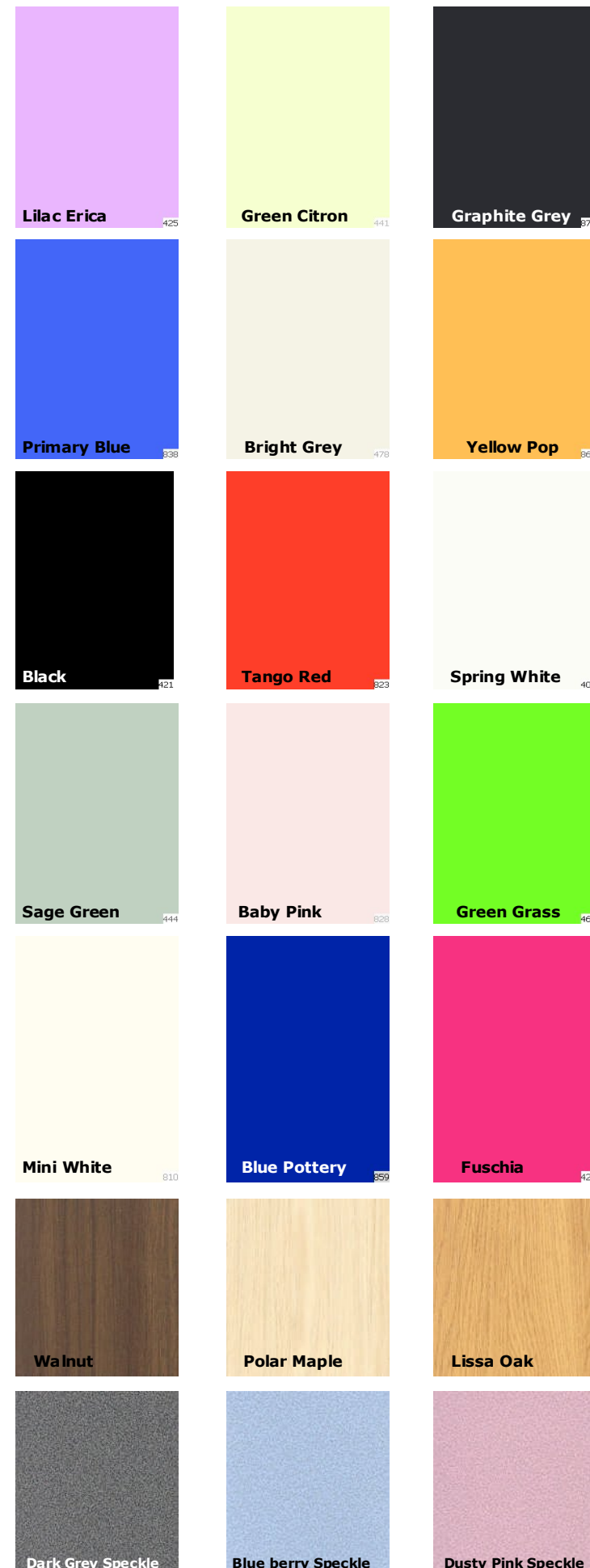


vanity unit panels



Crystal Palace

# Colours...



# NBS spec...

K32 Panel cubicles

## 120A PANEL CUBICLES

- **Type:** standard height to contractor design and CA approval of appearance. Preferred Suppliers and Products.
- **Manufacturer:** Decra Ltd - 020 8520 4371.
- Product Reference. Freestyle toilet / shower cubicles.
- **Panels: Dividing**
  - Height (overall): 1960mm above f.f.l.
  - Floor clearance: 150mm.
  - Core material: solid grade (compact) laminate.
  - Thickness: 13mm.
  - Facings: melamine protected colour.
  - Colour: tbc from manufacturer's ranges.
  - Edge treatment - black self edged - machined to a crescent with all exposed corners radiused for safety.
- **Panels: Pilasters and Duct Panels**
  - Height (overall): 1960mm above f.f.l. 2400mm for full height duct panels.
  - Floor Clearance: 150mm.
  - Core material: solid grade (compact) laminate.
  - Thickness: 13mm.
  - Facings: melamine protected colour.
  - Colour: t.b.c from manufacturer's ranges.
  - Edge treatment - as dividing panels.
- **Doors**
  - Height: 1810mm (1960mm above f.f.l.).
  - Core material: solid grade (compact) laminate.
  - Thickness: 13mm.
  - Facings: melamine protected colour.
  - Colour: tbc from manufacturer's ranges.
  - Edge treatment - as dividing panels.
- **Fittings: Generally**
  - Headrails: anodised aluminium with infill.
  - Pedestals: satin anodised aluminium.
- **Accessories:**
  - Coat hook.
  - Pull handles (for ambulant disabled cubicles).
  - Rotary action DDA compliant lock / indicator.
- **Other requirements:** None.

