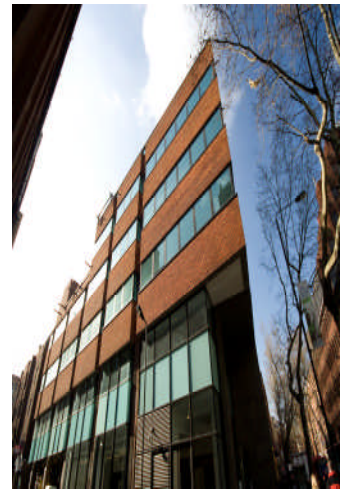




164 Shaftesbury Avenue; April 08 Decra Burj 20mm cubicle system



164 Shaftesbury Avenue London, outside



Solid surfacing vanity top, semi recessed basins



Doors have s/steel pull handles as design detail

Whitening strikes in Piccadilly !!! Decra 20mm Burj cubicle system in plain white solid grade laminate.

Shoreditch Architects- Child Graddon and Lewis chose the Decra 20mm Burj full height cubicle system for this speculative office fit out in Shaftesbury Ave London. Long edges of the doors and pilasters are rebated to create the linear frontage and specially designed aluminium extrusions secure the partitions to the floor and ceiling (extrusions have an infill strip to hide all fixings). This slick solution provides a contemporary alternative to traditional 44mm joinery and is kinder on the wallet !!. 13mm solid grade laminate partitions and ducts help to keep the system price competitive. S/steel DDA compliant hardware.

project case study



34 Forest Business Park
Argall Avenue, London
E10 7FB

Tel: 020 8520 4371
Fax: 020 8521 0605
Email: info@decraltd.co.uk
Web: www.decraltd.co.uk

Stylish cubicles & lockers, loo-art custom graphic cubicles, worktops, panels, bespoke furniture ...and much more.

