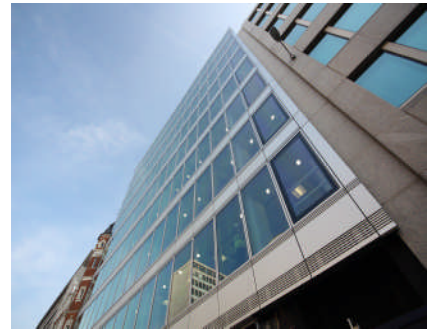
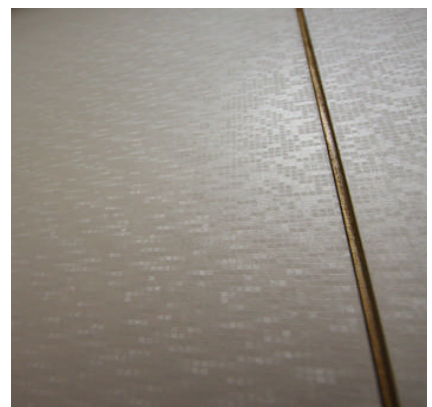




## Sturgis Associates Fleetway House revamp incorporates Decra Burj full height washroom cubicles with digital pixel effect laminate fascia !!!



Fleetway House in Farringdon Street has undergone a complete revamp by Shoreditch based Architect Sturgis Associates. Decra's Burj full height cubicle system was chosen and the 38mm light-weight fascia has been clad in a new concept in high pressure laminate called "Pixel". This laminate from Italy has the effect of digital camera pixels and has subtle hues within the single colour making this a classy finish for modern washrooms. Rebated hardwood edge creates the linear frontage but this is not really visible from the front elevation (when the doors are closed). German design DDA compliant stainless steel lock is every bit as good as D.Line but has a cheaper unit cost. The Pixel laminate range is available in numerous colours and we think, makes an interesting alternative to plain colours. Burj forms part of the Architectura collection from Decra featuring various innovative washroom cubicle ranges and associated products. Contact Decra for info.



34 Forest Business Park  
Argall Avenue, London  
E10 7FB

Tel: 020 8520 4371  
Fax: 020 8521 0605  
Email: [info@decraltd.co.uk](mailto:info@decraltd.co.uk)  
Web: [www.toiletcubicles.org](http://www.toiletcubicles.org)

Stylish cubicles & lockers, loo-art custom graphic cubicles, worktops, panels, bespoke furniture ...and much more.

